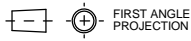


# A0 INSTALLATION DRAWING

IF THIS DOCUMENT IS PRINTED IN HARD COPY, IT IS FOR INFORMATION USE ONLY AND THEREFORE IS NOT SUBJECT TO UPDATING CONTROLS. ALWAYS REFER TO SOLIDWORKS VIEWER FOR LATEST ISSUE



THIS DRAWING IS CONFIDENTIAL AND IS SUPPLIED ON THE EXPRESS CONDITION THAT IT SHALL NOT BE LOANED OR COPIED OR DISCLOSED TO ANY OTHER PERSON OR FOR ANY OTHER PURPOSE WITHOUT THE WRITTEN CONSENT OF AP RACING LTD.

**AP Racing**  
Wheler Road  
Coventry  
CV3 4LB  
Tel: +44 (0)24 7663 9595  
Fax: +44 (0)24 7663 9559  
e-mail: sales@ap-racing.co.uk  
Web site: HTTP://www.ap-racing.com

© AP Racing Ltd. 2005

**GENERAL DESCRIPTION:**  
4 PISTON DIFFERENTIAL BORE CALIPER DESIGNED TO SUIT UP TO Ø355.0 x 32.0mm IRON DISC

**TYPICAL APPLICATION:**  
SUPER 1600 RALLY CAR

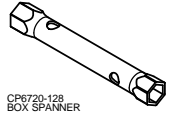
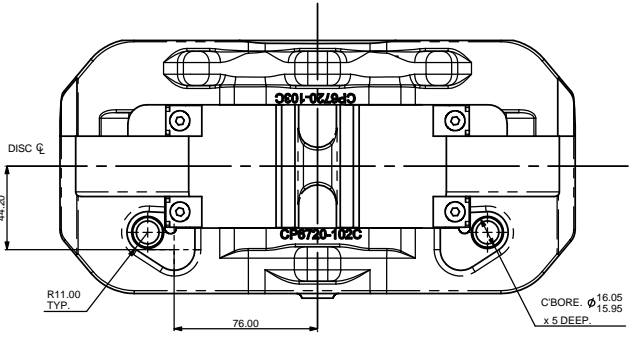
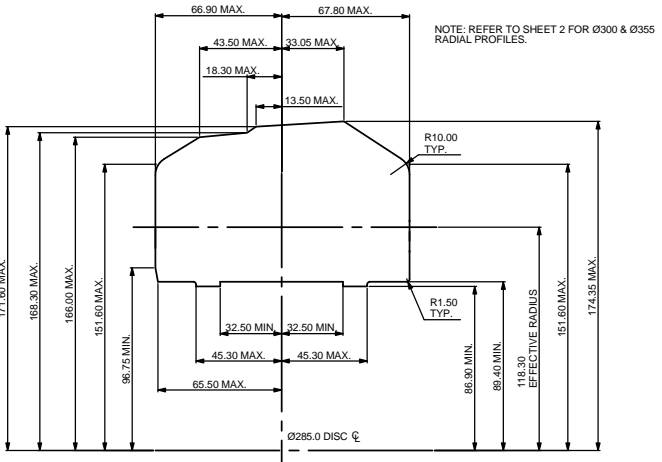
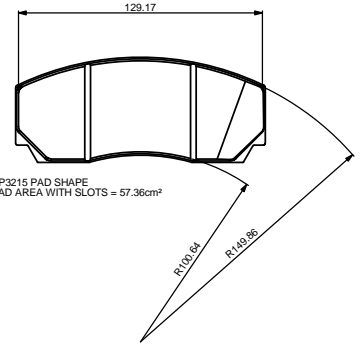
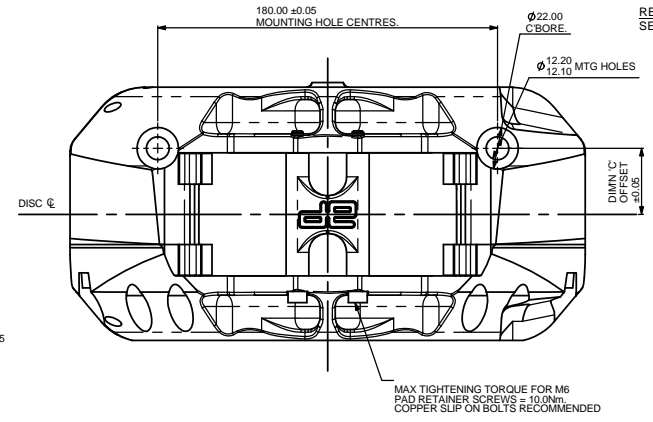
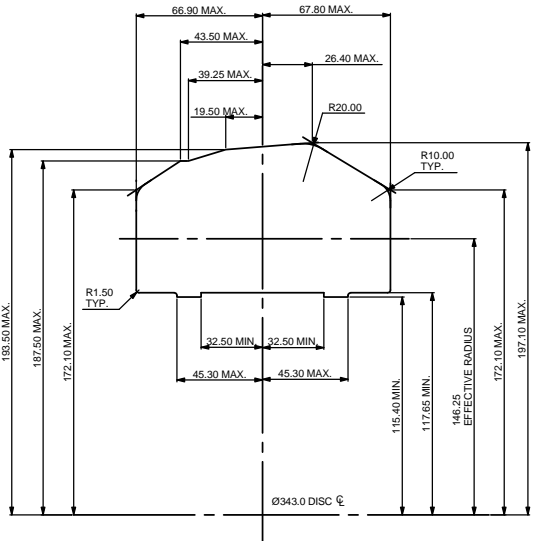
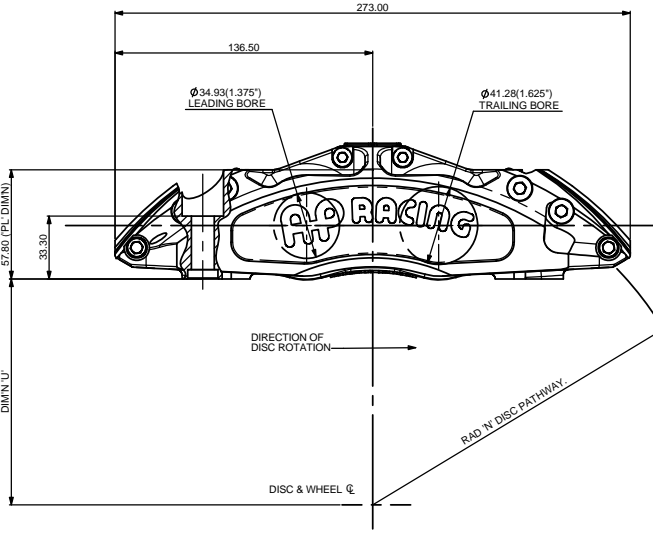
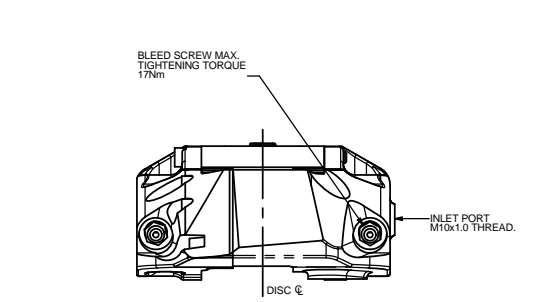
**TECHNICAL INFORMATION:**  
TOTAL PISTON AREA: 45.93cm<sup>2</sup>  
PISTON MATERIAL: ALUMINIUM ALLOY OR STAINLESS STEEL - SEE PART NO.  
BODY MATERIAL: ALUMINIUM ALLOY  
APPROXIMATE WEIGHT OF CALIPER LESS PADS : 2.5 Kg

**INSTALLATION INFORMATION**  
DISC & CALIPER MOUNTING TOLERANCES TO BE SUCH THAT THE DISC IS CENTRAL TO THE CALIPER TO WITHIN ±0.5mm.  
DISC DIAMETRICAL CLEARANCE SHOULD BE 2.5mm NOM. FROM DISC O.D. TO PATHWAY. THE O.D.  
BLEED SCREW MAX. TIGHTENING TORQUE 17Nm  
MAX. TIGHTENING TORQUE FOR M6 PAD RETAINER SCREWS = 17.6Nm.

**KEY TO DIMENSIONS:**  
DIMENSION 'PL': TOP OF PAD MATERIAL TO MOUNTING BOSS FACE WITH PAD SITTING DOWN ON LEDGE.  
DIMENSION 'U': WHEEL CENTRE LINE TO CALIPER MOUNTING BOSS FACE (DISC Ø/2)-DIMENSION 'PL'.

- CALIPER PART NUMBERS**
- CP6720-6S4 - RIGHT HAND TRAILING (ALU. ALLOY PISTON)
  - CP6720-6S4L - RIGHT HAND TRAILING (SST. PISTON)
  - CP6720-7S4 - LEFT HAND TRAILING (ALU. ALLOY PISTON)
  - CP6720-7S4L - LEFT HAND TRAILING (SST. PISTON)
  - CP6720-8S4 - RIGHT HAND LEADING (ALU. ALLOY PISTON)
  - CP6720-8S4L - RIGHT HAND LEADING (SST. PISTON)
  - CP6720-9S4 - LEFT HAND LEADING (ALU. ALLOY PISTON)
  - CP6720-9S4L - LEFT HAND LEADING (SST. PISTON)
  - CP6720-16S4 - RIGHT HAND TRAILING (ALU. ALLOY PISTON)
  - CP6720-16S4L - RIGHT HAND TRAILING (SST. PISTON)
  - CP6720-17S4 - LEFT HAND TRAILING (ALU. ALLOY PISTON)
  - CP6720-17S4L - LEFT HAND TRAILING (SST. PISTON)
  - CP6720-18S4 - RIGHT HAND LEADING (ALU. ALLOY PISTON)
  - CP6720-18S4L - RIGHT HAND LEADING (SST. PISTON)
  - CP6720-19S4 - LEFT HAND LEADING (ALU. ALLOY PISTON)
  - CP6720-19S4L - LEFT HAND LEADING (SST. PISTON)

**REPLACEMENT SEAL KIT**  
SEAL KIT (HIGH TEMP) CP4518-GK



**BLEEDING**  
A TOOL SIMILAR TO THAT SHOWN WILL BE REQUIRED TO BLEED THE BRAKES DUE TO THE ENCLOSED BLEED SCREWS. IT IS IMPORTANT THAT THE BOX WRENCH IS HOLLOW TO ALLOW A LENGTH OF BLEED PIPE TO BE INSERTED THROUGH THE TOOL. TOOL MAX. Ø17.50.

**CALIPER DATA**

CALIPER FAMILY	STROKE No				MAX DISC DIAMETER	DIMN 'E' DISC	DIMN 'C' OFFSET (mm)	PAD THICKNESS (mm)	RAD 'N' (mm)
	RHT	LHT	RHL	LHL					
CP6720-	6	7	8	9	355.0	28.0	35.0	16.8	180.0
CP6720-	16	17	18	19	355	32	37.0	16.8	180.0

Rev	Date & No.	Alterations	
		Particulars	By
1	16/02/01 B2977	BOX WRENCH DETAIL ADDED.	JH
2	19/03/01 RAC09463	TOL ADDED TO CBORE 16.0	JH
3	13/06/01 RAC09863	BOX SPANNER PART NO ADDED.	JH
4	24/07/01 B3121	SHEET 2 ADDED	JH
5	15/10/01 RAC09933	Ø330 DISC RADIAL PROFILE DETAIL ADDED	SAT
6	22/06/03 B3622	STAINLESS STEEL PISTONS ADDED AS ALTERNATIVE OPTION	SAT
7	12/08/03 B3720	Ø330 DISC DETAIL ADDED TO CALIPER DATA TABLE ALL EFFECTIVE RADII NOW CORRECT TO 2 D.P.	JH
8	10/06/04 B3720	Ø330 DISC DETAIL ADDED TO CALIPER DATA TABLE ALL EFFECTIVE RADII NOW CORRECT TO 2 D.P.	JH
9	19/07/04 B4019	CP6720-16/17/18/19S4 ADDED	JH
10	04/10/04 B4089	Ø300x32 & Ø355x32 RADIAL PROFILES ADDED	JH
11	04/05/05	17Nm MAX BLEED SCREW TIGHTENING TORQUE WAS 25Nm AT AMBIENT & 17Nm FOR BODY > 100°	JH
12	08/05/06	OFFSET ADDED TO TABLE	JH
13	04/10/06 B4651	CP6720-18/19S4L ADDED	SAT
14	17/05/07 B4656	CP6720-16/17S4L ADDED	SAT
15	01/10/12 B6624	TIGHTENING TORQUE FOR PAD RETAINER BOLTS 10NM WAS 17 NMI COPPER SLIP NOTE ADDED	SAT

SCALE 1:1

SHEET 1 OF 2

DRAWN: jheritage

APPROVED:

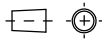
DERIVED FROM:

TITLE: CALIPER INSTALLATION

DRG NO: cp6720-10cd

# A0 INSTALLATION DRAWING

IF THIS DOCUMENT IS PRINTED IN HARD COPY, IT IS FOR INFORMATION USE ONLY AND THEREFORE IS NOT SUBJECT TO UPDATING CONTROLS. ALWAYS REFER TO SOLIDWORKS VIEWER FOR LATEST ISSUE



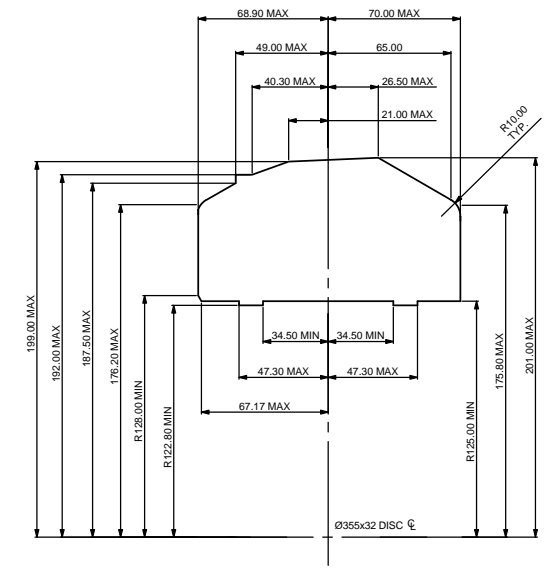
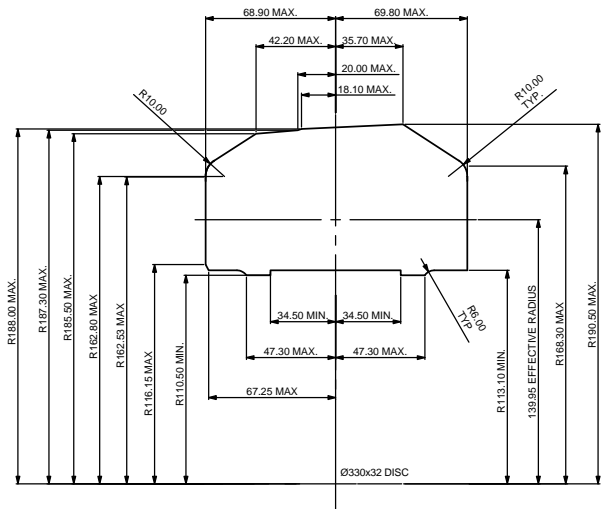
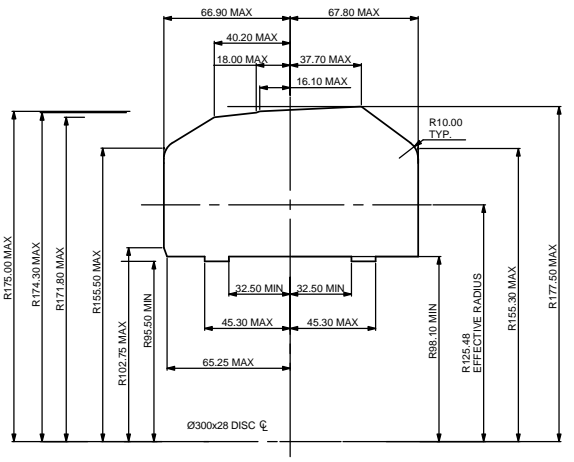
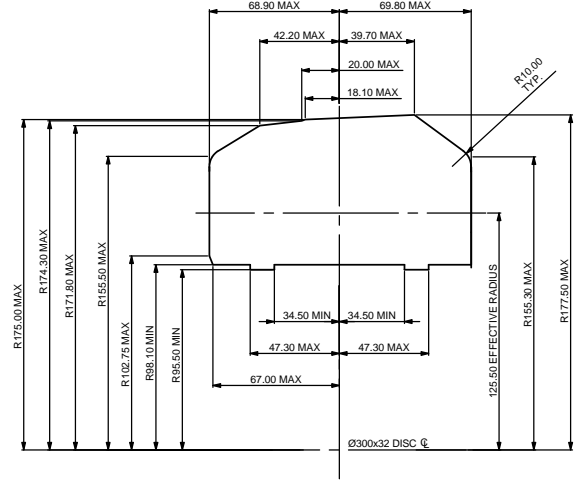
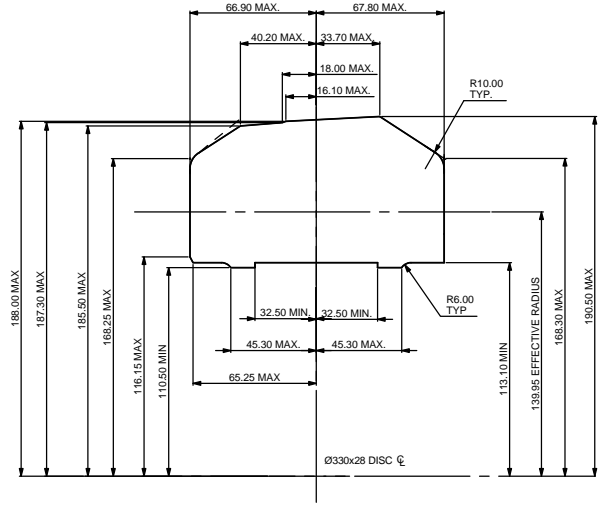
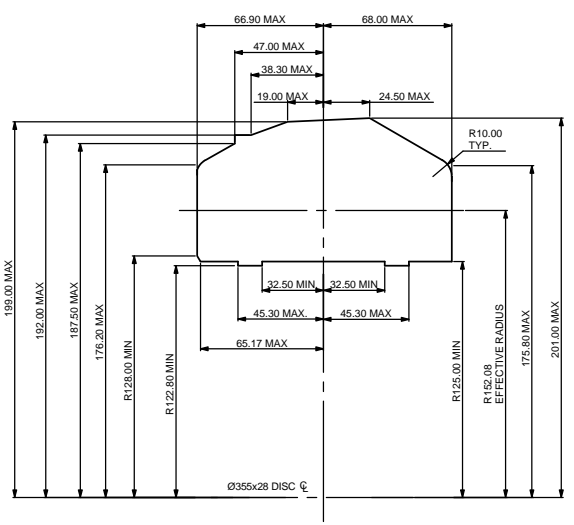
FIRST ANGLE PROJECTION

THIS DRAWING IS CONFIDENTIAL AND IS SUPPLIED ON THE EXPRESS CONDITION THAT IT SHALL NOT BE LOANED OR COPIED OR DISCLOSED TO ANY OTHER PERSON OR USED FOR ANY OTHER PURPOSE WITHOUT THE WRITTEN CONSENT OF AP RACING LTD.



AP Racing  
Wheler Road  
Coventry  
CV3 4LB  
Tel: +44 (0)24 7663 9595  
Fax: +44 (0)24 7663 9559  
e-mail: sales@apracings.co.uk  
Web site: HTTP://www.apracings.com

Alterations		Index
Date & No.	Particulars	Zone
	SEE SHEET 1 FOR CURRENT ISSUE.	



SCALE 1:1	SHEET 2 OF 2
DRAWN	heritage
APPROVED	
DERIVED FROM	
TITLE	
DRG NO.	cp6720-10cd